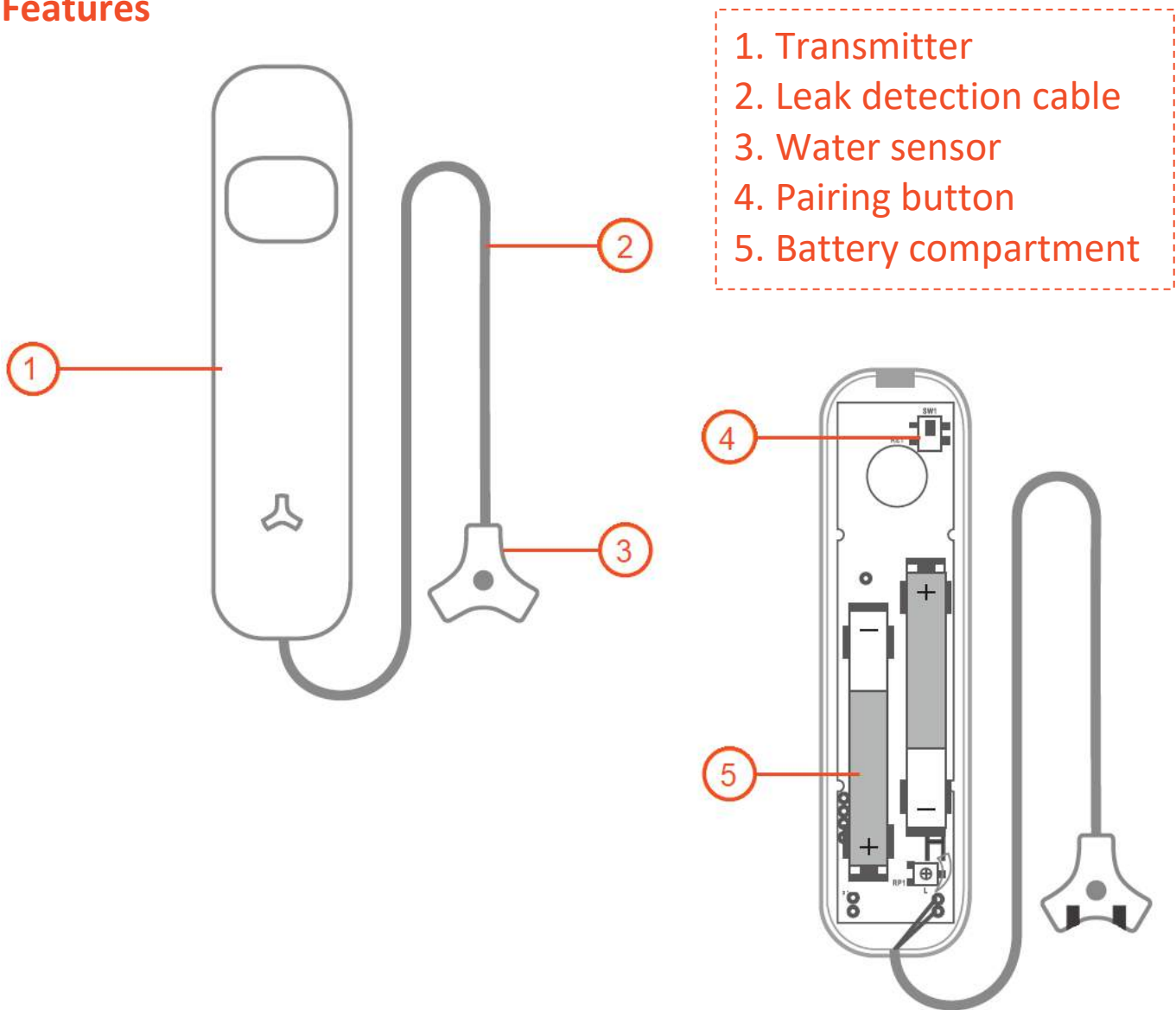


Water Sensor User Guide

The water sensor detects water and transmits a signal to the Noah hub triggering an alarm.


Features



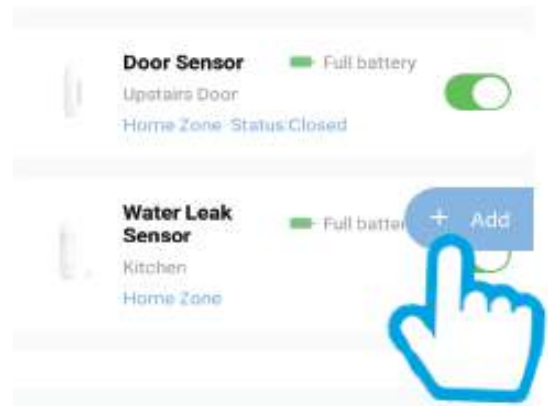
Tamper Alarm

If an intruder attempts to remove or damage the sensor, a tamper alarm is triggered and the user is notified immediately.

Pairing the water sensor to the Noah Hub

1. Open the Clan at Home app on your smartphone or tablet
2. Click Noah Alarm System
3. Press the  icon to enter the accessories menu

4. Press the (+Add) icon.
The Noah hub LED will turn purple when it is ready for pairing.



5. Remove the back cover from the back of the water sensor. Press the pairing button.



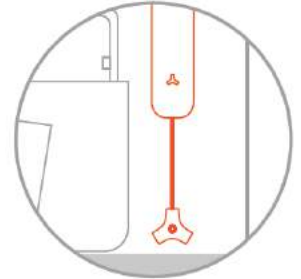
6. The Noah hub LED will flash green once and make a beep sound when it has paired successfully.

The water sensor will appear under the sensor list on the App. Please note: the water sensor is set in Always On Zone by default.

Installing the water sensor

1. Open the back cover of the sensor, check the battery is fitted properly

2. Ensure the area that the sensor will be located is clean and free from dust and moisture.
The sensor should be around 1-2mm away from the surface you are monitoring, the sensor should not be touching the surface.



3. Use the provided screw to fix the sensor securely

4. Once the sensor has been fitted, use the adhesive strip to carefully mount the sensor.

