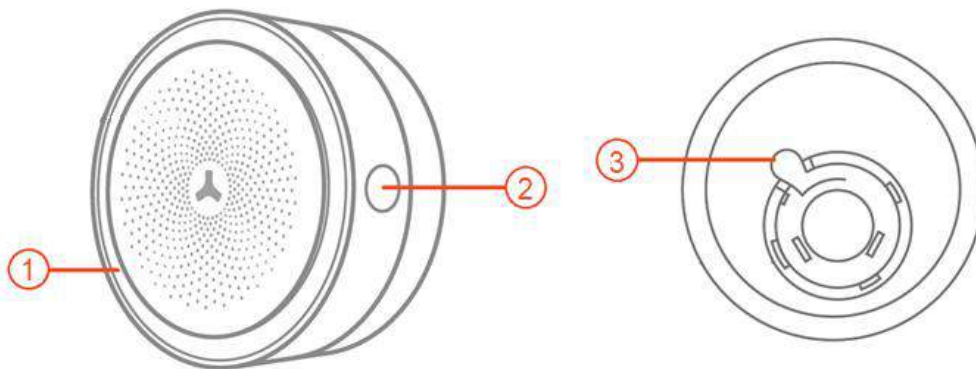


RF Repeater User Guide

Connect the RF repeater to the Noah hub to extend the RF range for paired sensors. The built-in LED lights up to let you know Noah's status.



1. LED indicator

Red LED: *Pairing mode*

Green LED: *Noah disarmed*

Blue LED: *Noah armed*

Green LED flashing: *Transmitting signal*

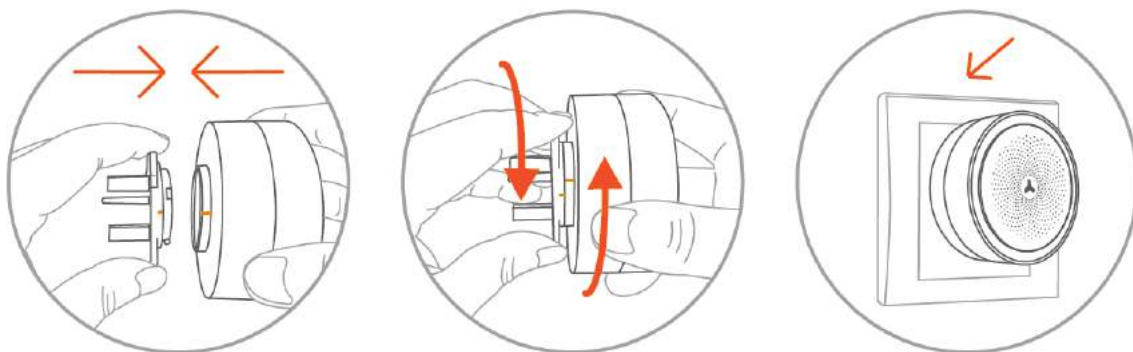
Blue LED flashing: *Noah in home mode*

2. Pairing button

3. Plug handle

Press the handle down and rotate to add or remove plug

Installation



1. Fix the 3-pin adapter on to the RF repeater by aligning the pins
2. Rotate the adapter clockwise to fix it securely to the RF repeater
3. Plug in to a wall socket and ensure the power is on

The RF repeater is powered using the mains power socket. The back-up battery is for emergency use only, when the power supply is cut unexpectedly.

Pairing the RF repeater to the Noah Hub

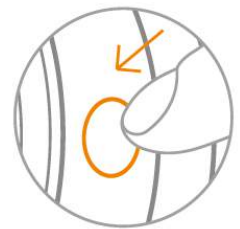
You will need the following to pair the siren to the Noah hub.

- RF repeater
- Noah hub
- Remote control (provided with the Noah hub)

1. Plug the RF repeater in to a mains power socket. The LED will light up.

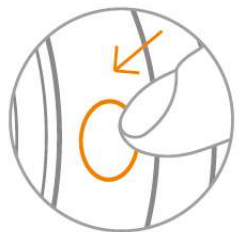
2. Press the pairing button on the side of the RF repeater.

The repeater will enter pairing mode – the LED will turn red and make a beeping sound



3. Arm the Noah hub. The LED on the RF repeater will flash once when it has paired successfully.

4. Then press the pairing button on the side of the RF repeater again.



5. Lastly, test the RF repeater by using the remote control to arm Noah again. The LED will turn blue.

Please note: The RF repeater does not appear in the Accessories menu.

Unpairing the RF repeater from the Noah Hub

Hold the pairing button down for 5 seconds until the RF repeater makes a beeping sound