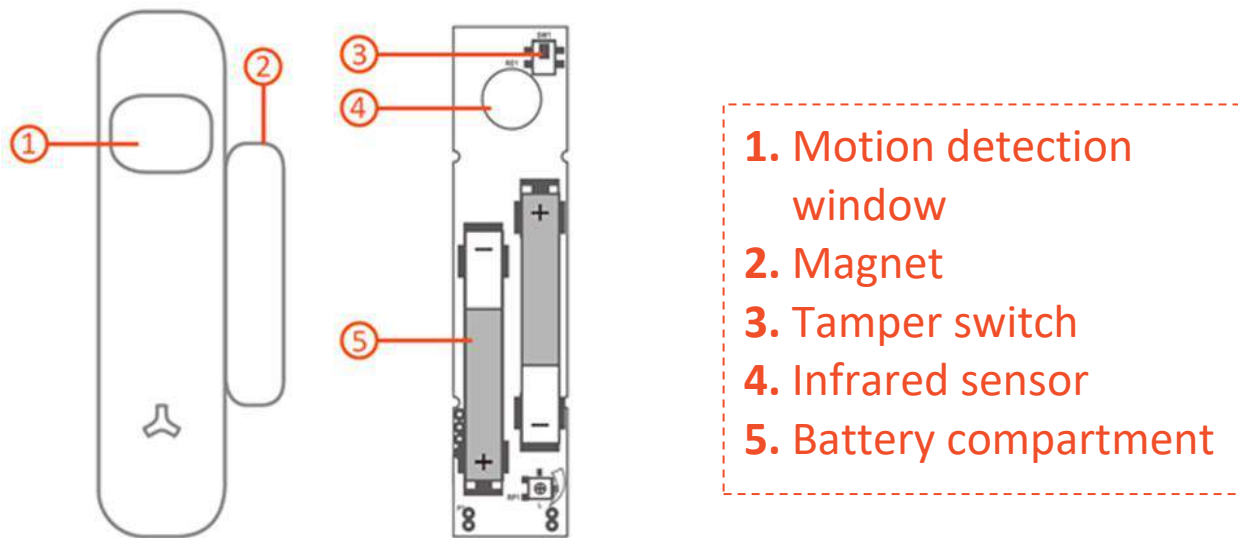


# Motion & Door + Window Sensor User Guide

The combined motion & door/window sensor can be installed on doors, windows or even cupboards. The sensor transmits a signal to the Noah hub when the door or window is opened or when movement is detected, triggering an alarm.

## Features



## Tamper Alarm

If an intruder attempts to remove or damage the sensor, a tamper alarm is triggered and the user is notified immediately.

## Working Status



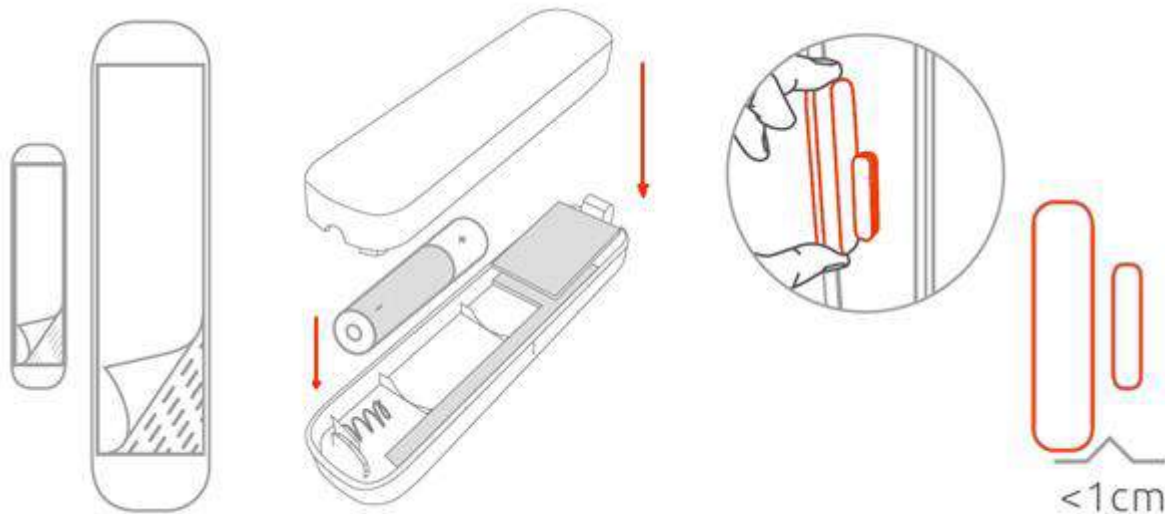
**LED flashes once** - Door or window has been opened.  
Alarm has been triggered



**LED flashes every 3 seconds** - Low battery indicator.  
Replace batteries immediately

## Installation

1. Remove the back cover from the sensor and pull out the battery tabs. Then replace the cover
2. Ensure the area that the sensor will be located is clean and free from dust and moisture. Avoid mounting the sensors in areas with lots of metal or electrical wiring
3. Use the adhesive strip to carefully mount the sensor on to the door/window frame
4. Mount the magnet on to the door/window no more than 1cm from the sensor

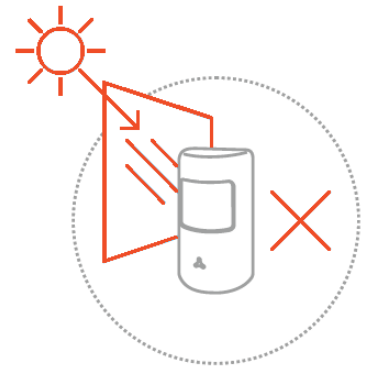


**Walk Test:** Walk across the detection area and watch the LED indicator – it will flash once when movement is detected. The sensor will detect once every minute.

## Please note:

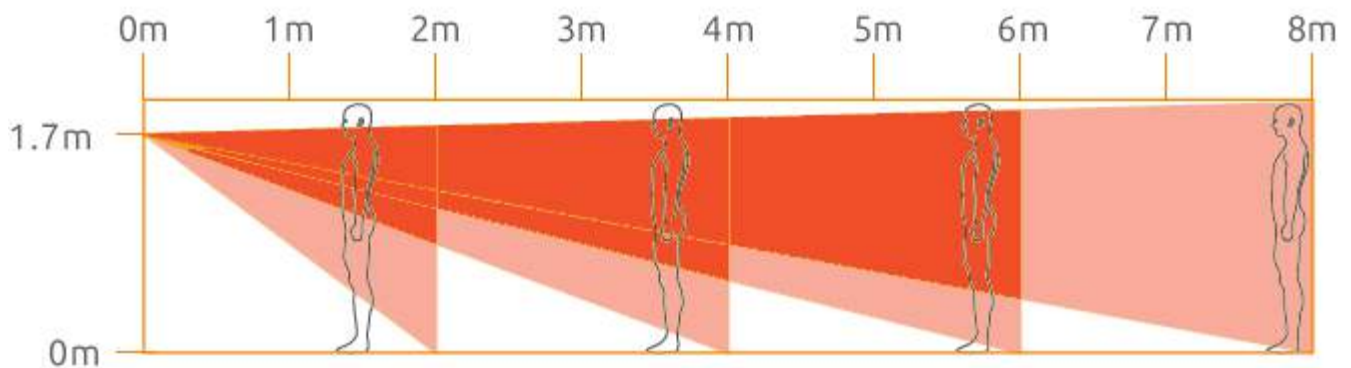
Avoid mounting the sensor close to heaters, radiators or air conditioning units

Avoid facing the sensors towards windows which could interfere with the infrared



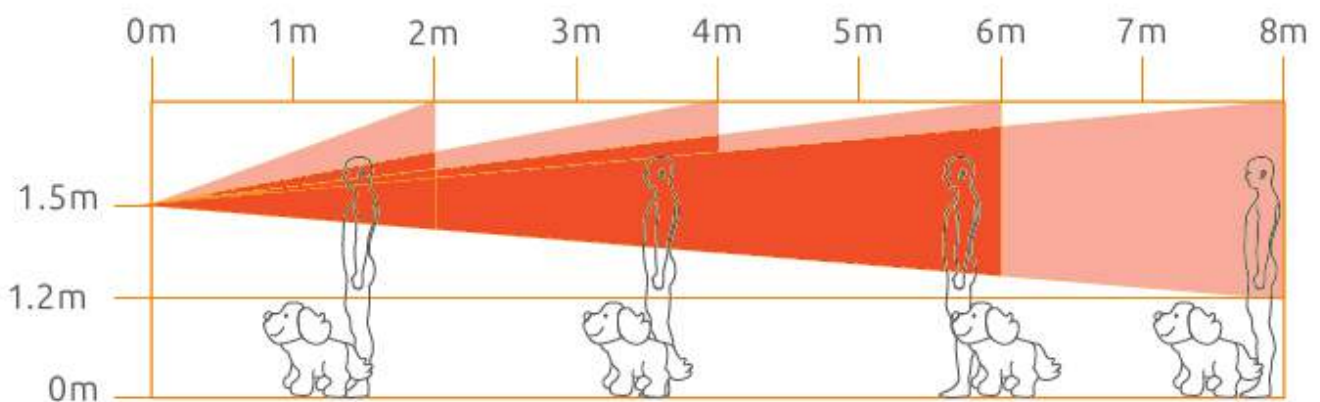
## Normal Mode

We recommend mounting the sensor at approximately 1.7metres from ground level. Motion detection area is 90° with 8metre range.



## Pet Friendly Mode

If you are a pet owner, we recommend mounting the sensor at approximately 1.5metres from ground level. Ensure the sensor is installed with the motion detection window at the bottom.



## Specification:

Power supply: DC 1.5V/AA battery

Standby current:  $\leq 25\mu\text{A}$

Alarm current:  $\leq 70\text{mA}$

Transmitting distance:  $< 150\text{m}$  (in open area)

Wireless RF frequency: FHSS/433MHz

Working temperature:  $-10^{\circ}\text{C} - 55^{\circ}\text{C}$

Humidity: Up to 80% (non-condensing)

Detector dimension (L/W/H): 24.5 x 96.5 x 19.55 mm

Magnet dimension (L/W/H): 14 x 48 x 11 mm