



Oscar 2

Start Up Guide

Protect and monitor the things you love

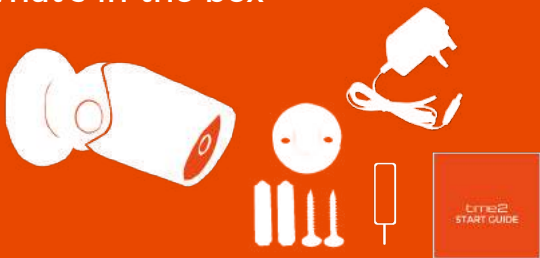
Contents

- 1 What's in the box
- 2 Get Started
- 3 Download App
- 4-5 Register
- 6-7 Add a Home
- 8-11 Add Oscar 2
- 12 Live View
- 13 Playback
- 14 Add SD Card
- 15 Reset
- 17 Installation

Struggling to read?

View this start up guide online at
time2technology.com/manuals

What's in the box



- Oscar 2 WiFi Camera
- Wall Mounting Screws
- Reset Pin
- Power Adapter
- Start Up Guide

Be ready

You will need your WiFi router password. Write it down below so its handy when you need it!

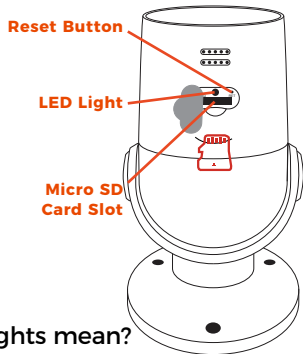
Get Started

Please complete set up before mounting the camera.

Connect Oscar to the mains using the power adapter provided.

The red LED will come on once plugged in and Oscar will chime before he is ready to connect.

If you would like Oscar to record, you will be required to insert a Micro SD card. Oscar will support any sized Micro SD card up to 128 GB.



What do the flashing lights mean?



Solid Red
Starting up



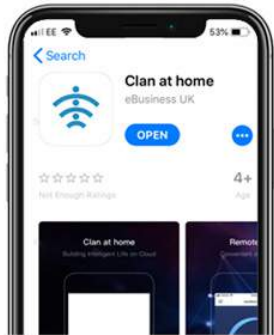
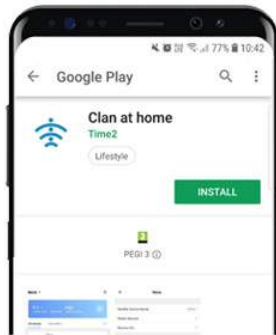
Flashing Red
Ready to connect



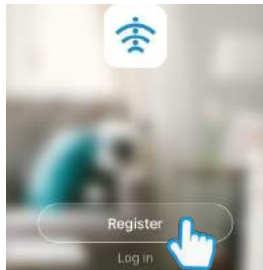
Solid Blue
Connected

Download App

Download the "Clan at home" App on the iOS App Store or Google Play Store.



Register



Step 1

Open the app then select Register



Step 2

Enter your mobile phone number
or email address

**Please ensure you enter your
full phone number including "0"**



Step 3

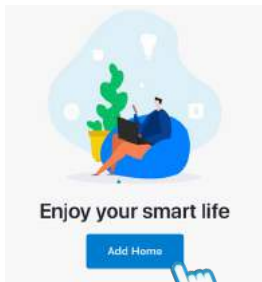
Enter the verification code sent
via SMS or email



Step 4

Create your password to login

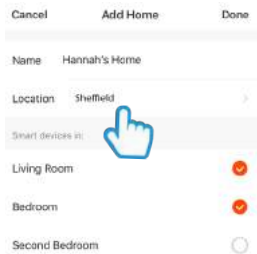
Add a Home



Step 1

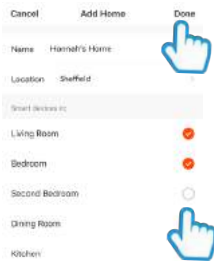
Select "Add Home"

Add a Home



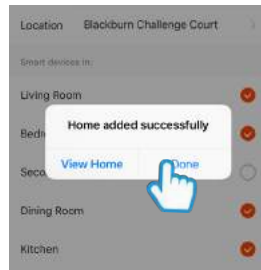
Step 2

Enter a name for your home and select location



Step 3

Select rooms to add to your Home then press "Done" to save



Step 4

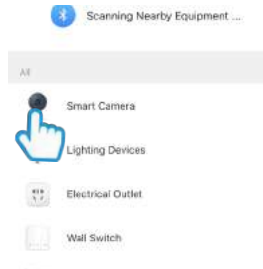
Once completed, press Done to add your Camera

Add Oscar 2



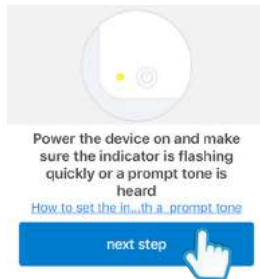
Step 1

In My Home, click the (+) icon in the top right-hand corner of the screen



Step 2

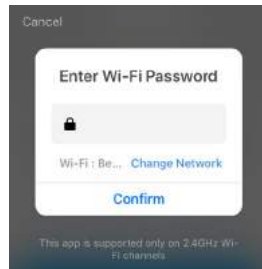
Select Smart Camera



Step 3

Make sure the device is flashing red. (If it is not flashing, see the reset instructions on page 14)

Select Next Step



Step 4

Enter your WiFi router password
Then press Confirm

Add Oscar 2



Step 5

Remove the plastic film from the camera lens

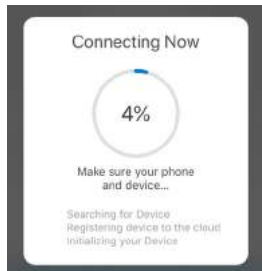
Hold your phone up to Oscar



Step 6

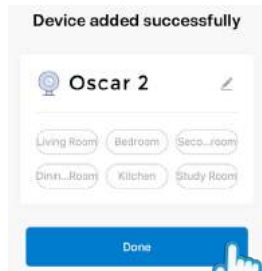
If you heard Oscar chime, press "I heard the beep"

If you don't hear the chime, reposition Oscar in front of the phone



Step 7

Oscar will then establish a connection to Clan.



Step 8

Once connected you can change Oscar's name and select the room he's in.

Press Done

Live View



- Hear what is happening around the camera
- Select the video quality (Lower quality may broadcast more smoothly)
- Full Screen
- Turn on to get instant alerts to your phone when there's movement
- Select to speak into the camera
- Record live footage onto your smartphone memory
- Save a screenshot on your smartphone memory

Playback



- Hear sound around the camera
- Full screen
- Select the time you want to view
- Save the playback camera footage onto your phone memory
- Change date of video playback
- Save a screenshot of playback video onto your phone memory

Add SD Card

If you would like Oscar to record you will be required to insert a Micro SD card. Oscar will support any sized Micro SD card up to 128 GB.

Step 1

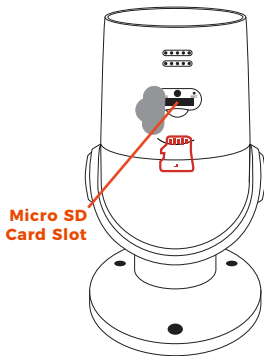
Turn off power to camera.

Step 2

Find the Micro SD card slot on the underside of Oscar and insert the card into the slot far enough for it to click into place.

Step 3

Turn the power to camera back on.



Format SD Card

Before Oscar can start recording you will have to format the micro SD card.



Step 3

Select your camera and click on "..." to bring up the settings.

Select SD Card Settings.



Step 4

Click Format SD Card and press confirm, Oscar will begin to format the Micro SD card.

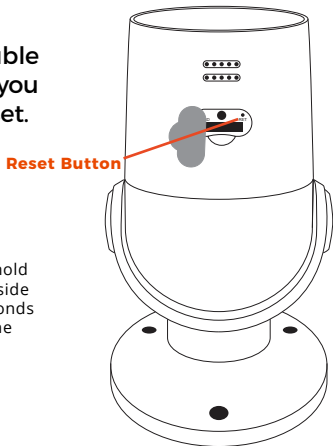
Please note: it will take a couple of minutes to format the card.

Reset

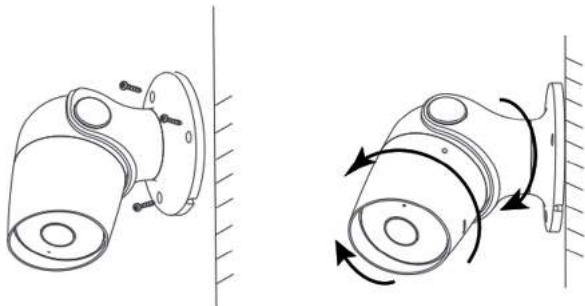
If you are having trouble connecting to Oscar you may need to do a reset.

How to reset Oscar

Use the reset pin provided to hold down the button on the underside of the camera for up to 15 seconds until the camera chimes and the LED is flashing red.



Installation



Easy Mounting

Use the provided wall screws to mount the camera onto the wall.
Adjust the camera angle according to your requirements.

Be a part of Clan

Are you on Facebook? Join our Clan to speak to other members of the Clan and our dedicated UK based support team:

www.facebook.com/groups/partoftheclan

Need further Help?

Contact our Customer Support team on Social Media



[facebook.com/time2HQ](https://www.facebook.com/time2HQ)



m.me/time2HQ



[@time2HQ](https://twitter.com/time2HQ)

or visit our support page

time2technology.com/support