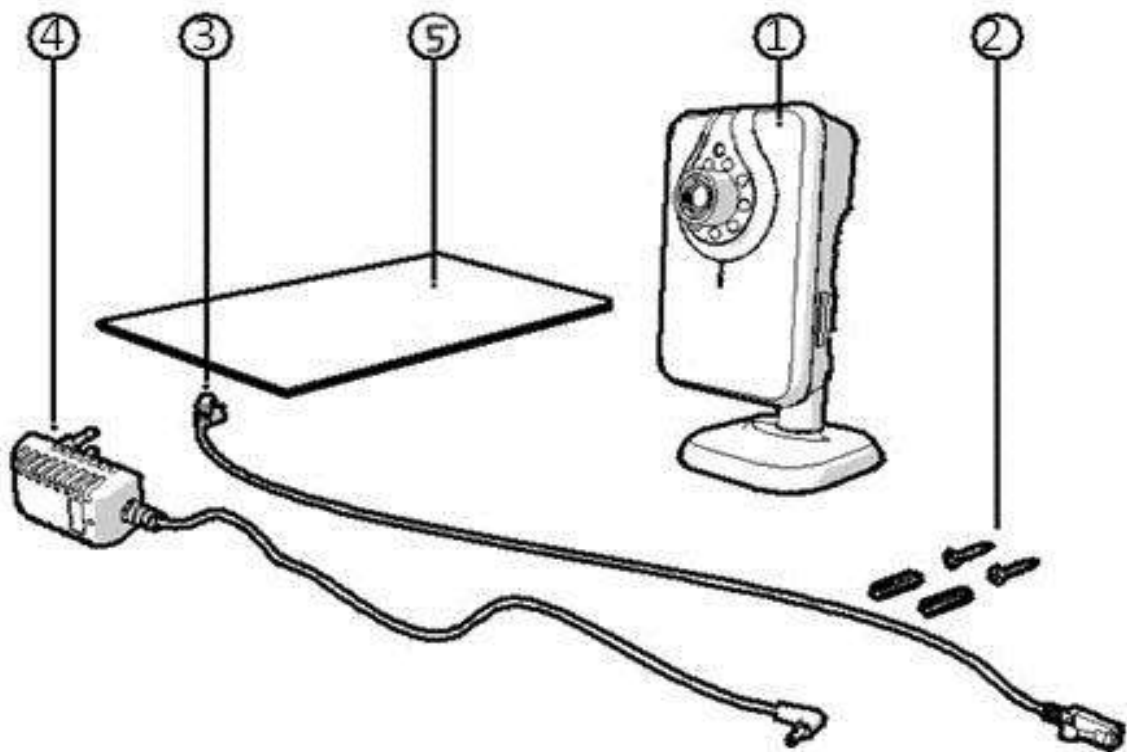


time2

**MIP12 Quick PC Setup  
Guide**

## What comes in the box?

1. MIP12 Camera with base.
2. Two wall assembly screw and plugs.
3. Ethernet Cable.
4. DC Supply (power supply).
5. User Manual Card



## Video Setup Guide

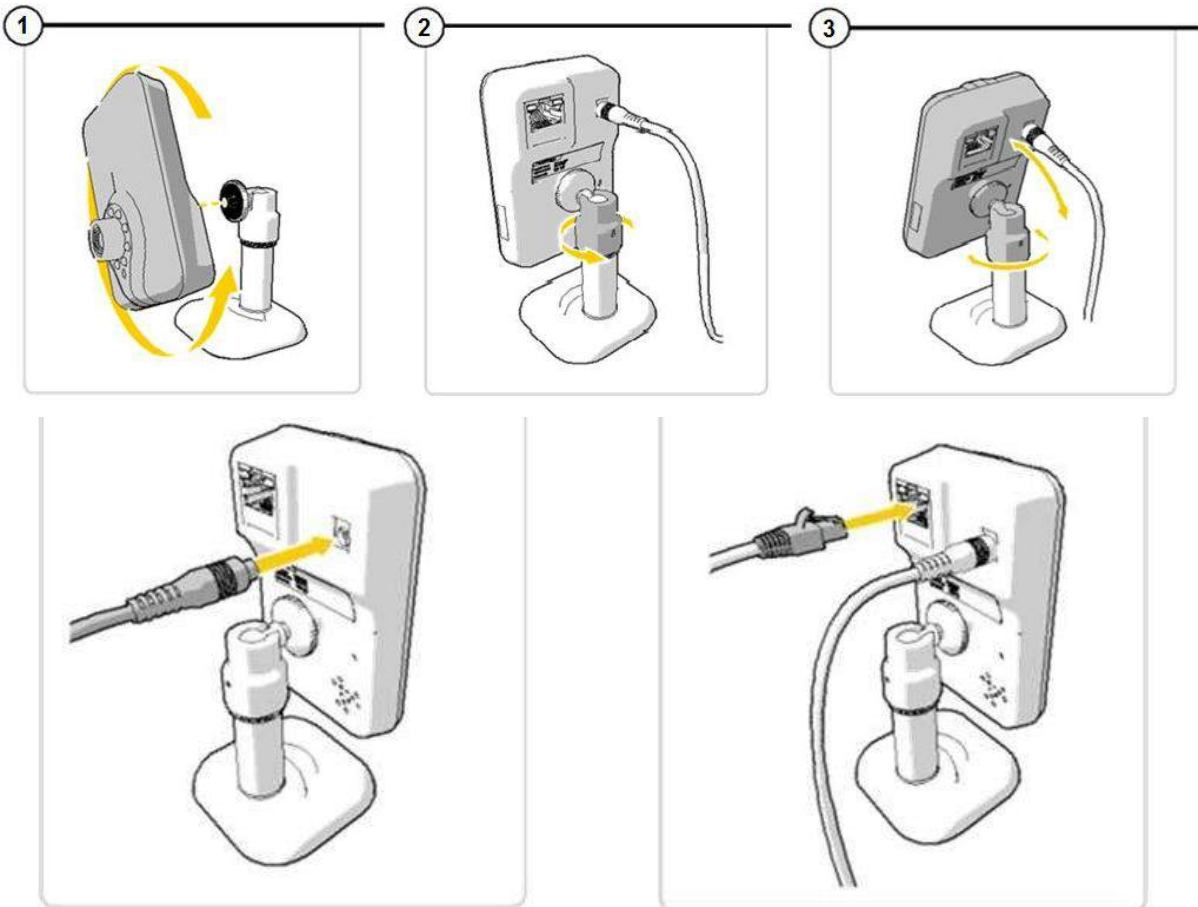
View our Video Setup Guide for a fast and easy setup for your camera. Please ensure the subtitles are switched on in YouTube.

Visit

<https://youtu.be/LjpQVImqbCM>



## Connecting the camera



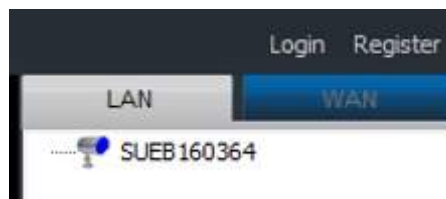
1. Mount the camera on the stand, twist the camera into the screw on the stand.
2. Use the screw-plate on the back of the camera to tighten the grip and hold the camera in place.
3. In order to change the camera angle, twist the casing around the ball-joint. This will enable you to position the camera horizontally or vertically.
4. Tighten the casing around the ball joint to hold the camera securely in place.
5. Connect the power adapter to the back of the camera then plug into a power outlet.
6. Connect one end of the supplied Ethernet cable to the network port on the camera. Connect the other end of the Ethernet cable to the router.
7. The green LED light on the back of the camera and on the front of the camera will light up and flash when the camera has successfully connected to a network.

## WiFi Connection Setup:

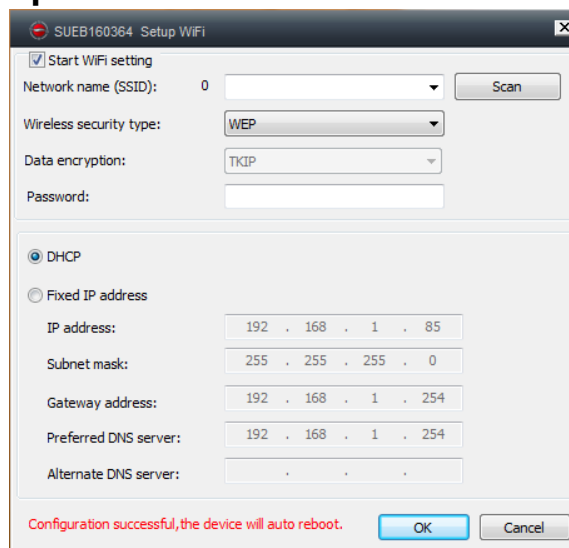
1. Download the **App For Windows** from the link below:

<https://www.time2technology.com/product-downloads/Time2-MIP12-Wireless-Surveillance-Camera.html>

2. Open the software and click on the **LAN** tab on the top right hand corner of the screen. The camera name will appear showing that its status as online. Click on the camera to view the Live Feed.



3. To establish a wireless connection right click on the camera name and click on **Setup WiFi**



4. Click on **Start WiFi Setting** and then click scan.
5. Under the **Network Name** drop down choose your router.
6. In **Password** enter your network password
7. Click **OK** and remove the Ethernet cable from the camera.

The camera will automatically configure itself with the router. Once this is complete the camera will restart and the connection will be established.

## **Connecting to your camera away from home.**

1. To establish a **WAN connection**, log into the camera via the login page on the APP.
2. Use the login details found on the back of the camera to log into the camera and view the Live Feed.
3. Once you log into your camera, click on the camera name to bring up the Live Feed.

## **Support**

For further support with setup and if you require any help to make the most of your camera please contact our customer services support team.

<https://www.time2technology.com/en/support/>

## **Connect With Us:**



<http://m.me/time2HQ>



[www.facebook.com/time2HQ](http://www.facebook.com/time2HQ)



[www.twitter.com/time2HQ](http://www.twitter.com/time2HQ)