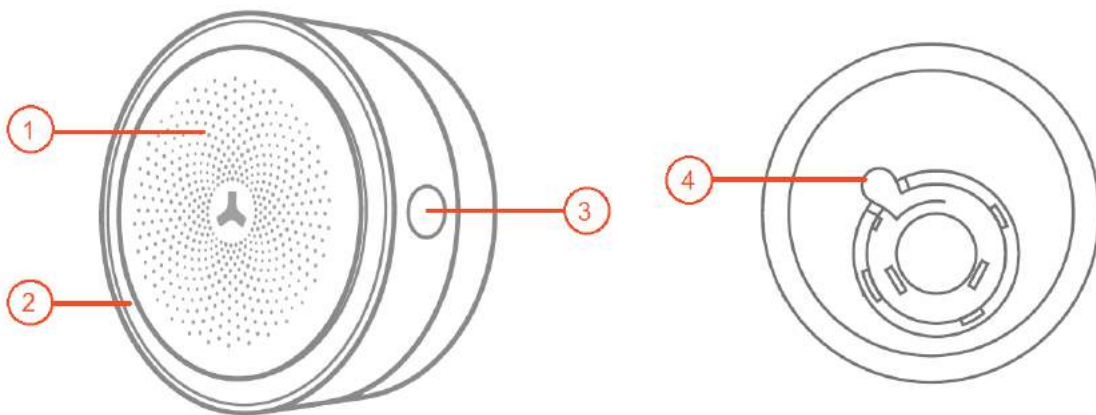


Indoor Siren User Guide

Connect the indoor siren to the Noah hub as an additional siren. The siren acts as a repeater so when Noah is armed, it will make a loud beeping sound to alert you and the built-in LED will light up acting as a deterrent.

If the alarm is triggered, the siren will sound and the LED will flash quickly.



1. Siren

2. LED indicator

Red LED: *Pairing mode*

Green LED: *Noah disarmed*

Blue LED: *Noah armed*

Blue LED flashing: *Noah in home mode*

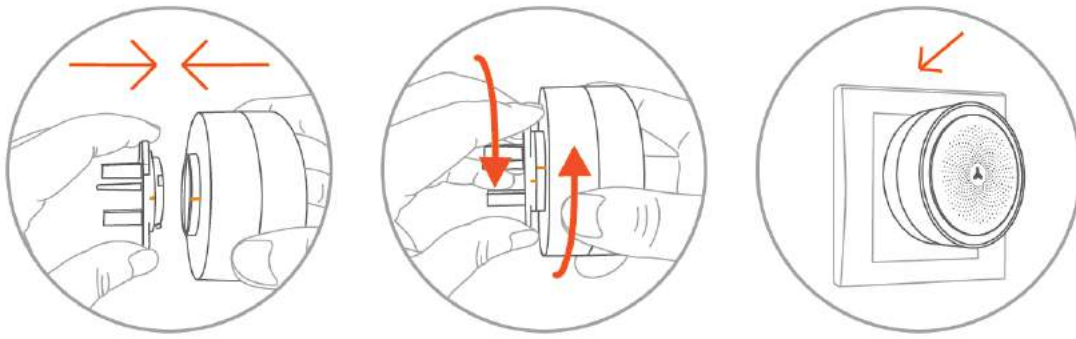
3. Pairing button

4. Plug handle

Press the handle down and rotate to add or remove plug

Installation

1. Fix the 3-pin adapter on to the indoor siren by aligning the pins
2. Rotate the adapter clockwise to fix it securely to the siren
3. Plug in to a wall socket and ensure the power is on



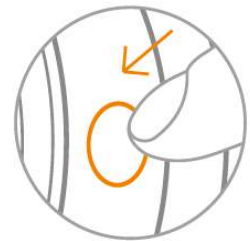
The indoor siren is powered using the mains power socket. The back-up battery is for emergency use only, when the power supply is cut unexpectedly.

Pairing the indoor siren to the Noah Hub

You will need the following to pair the siren to the Noah hub.

- Indoor siren
- Noah hub
- Remote Control (provided with the Noah hub)

1. Plug the siren in to a mains power socket. The siren LED will light up
2. Press the pairing button on the side of the siren. The siren will enter pairing mode – the siren LED will turn red and make a beeping sound
3. Arm the Noah hub. The LED on the siren will flash once when the siren has paired successfully.
4. Then press the pairing button on the side of the siren again.



5. Lastly, test the indoor siren by using the remote control to arm Noah again. The siren will also make a beeping noise and the LED will turn to blue.

Please note: As the siren acts as a repeater to the Noah Hub, it does not appear in the Accessories menu.

Unpairing the indoor siren from the Noah Hub

Hold the pairing button down for 5 seconds until the siren makes a beeping sound