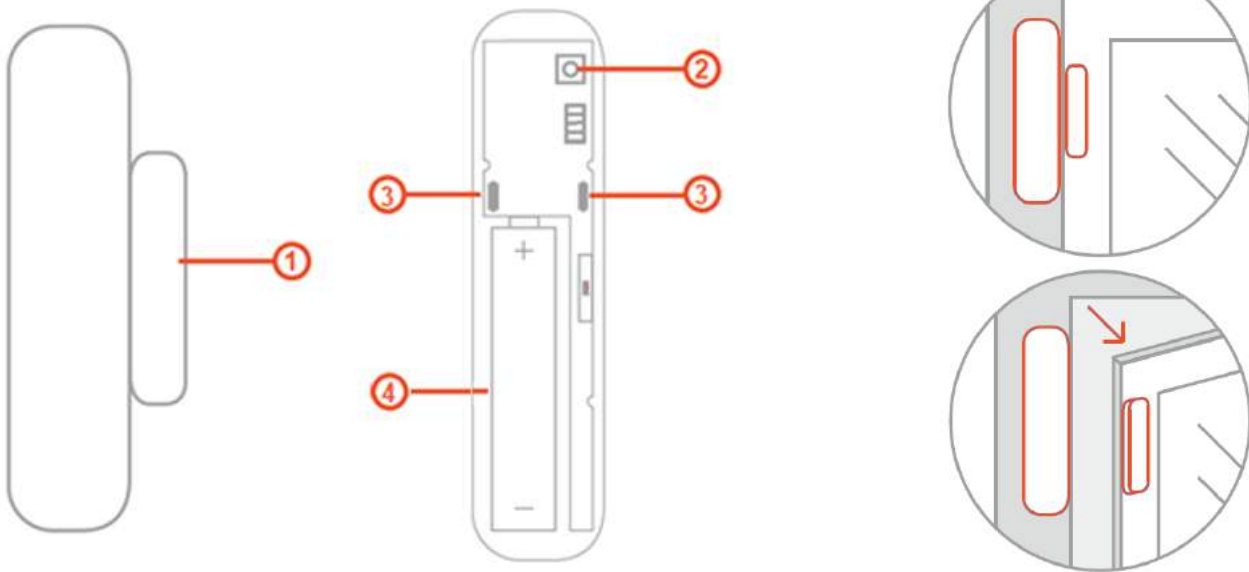


Door + Window Sensor User Guide

The door + window sensor can be installed on doors, windows or even cupboards. The sensor sends a signal to the Noah hub when the door or window is opened triggering an alarm.

Features



- | | |
|------------------|------------------------|
| 1. Magnet | 3. LED Indicator |
| 2. Tamper Switch | 4. Battery Compartment |

Tamper Alarm

If an intruder attempts to remove or damage the sensor, a tamper alarm is triggered and the user is notified immediately.

Working Status



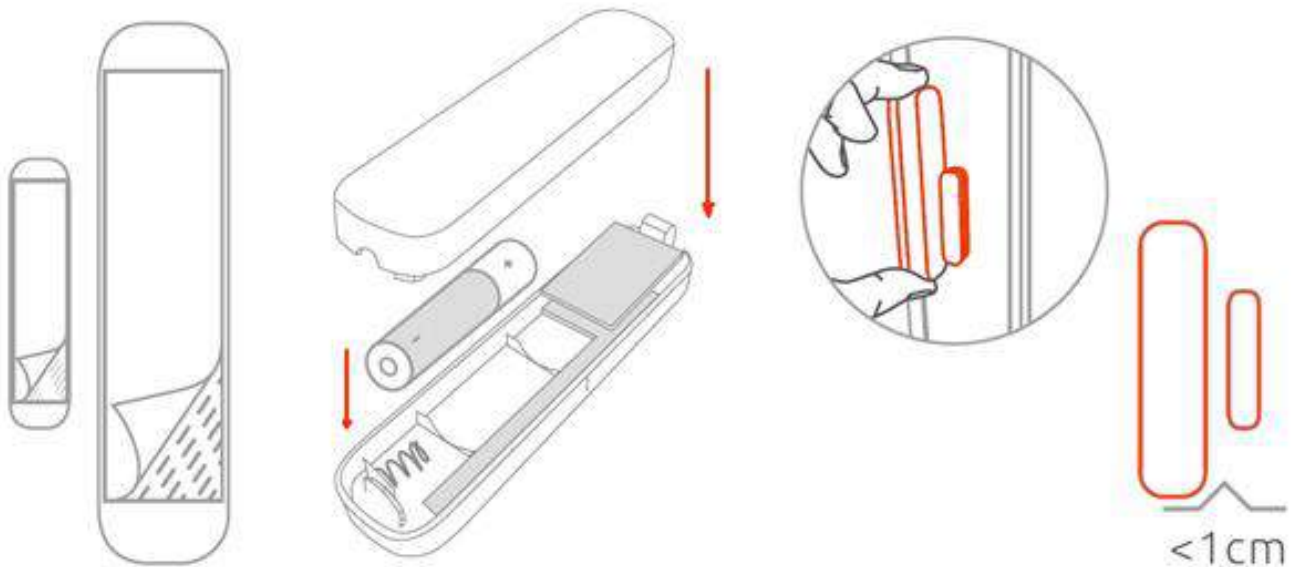
LED flashes once - Door or window has been opened.
Alarm has been triggered



LED flashes every 3 seconds - Low battery indicator.
Replace batteries immediately

Installation

1. Open the back cover of the sensor, check the battery is fitted properly
2. Ensure the area that the sensor will be located is clean and free from dust and moisture. Avoid mounting the sensors in areas with lots of metal or electrical wiring
3. Use the adhesive strip to carefully mount the sensor on to the door/window frame
4. Mount the magnet on to the door/window no more than 1cm from the sensor.



The sensor is set in Normal zone as default. If the sensor moves more than 2cm away from the magnet, it will trigger an immediate alarm when Noah is armed.

Specification:

Power supply: DC 1.5V/AA battery

Standby current: $\leq 25\mu\text{A}$

Alarm current: $\leq 70\text{mA}$

Transmitting distance: $< 150\text{m}$ (in open area)

Wireless RF frequency: FHSS/433MHz

Working temperature: $-10^{\circ}\text{C} - 55^{\circ}\text{C}$

Humidity: Up to 80% (non-condensing)

Detector dimension (L/W/H): 24.5 x 96.5 x 19.55 mm

Magnet dimension (L/W/H): 14 x 48 x 11 mm